

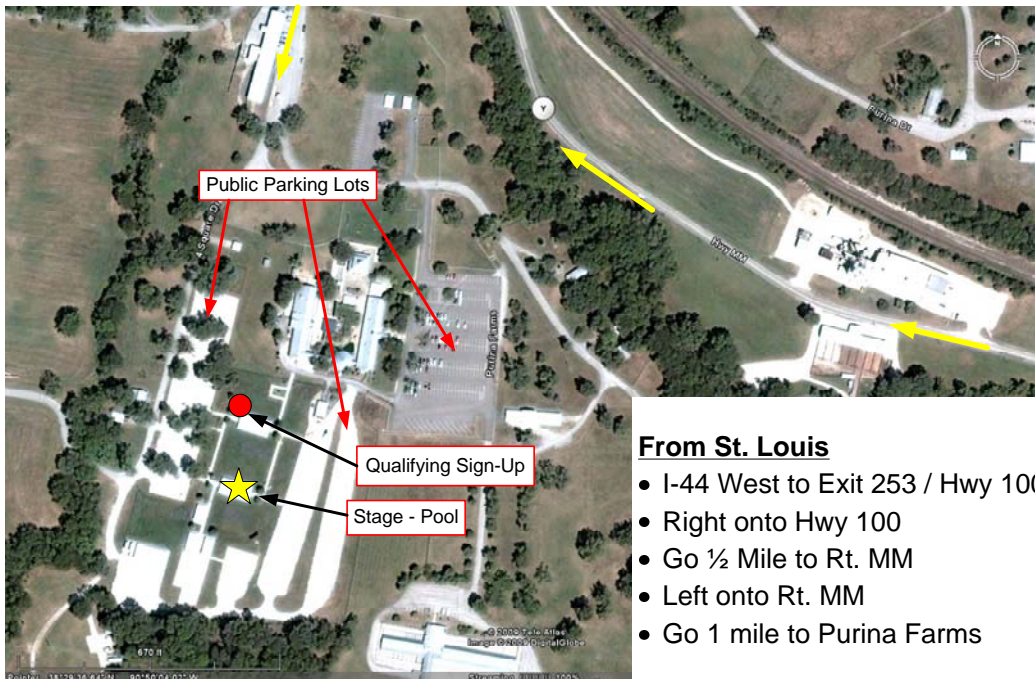


## Public Qualifying & Try Outs: Information Sheet Purina Farms, Gray Summit, Missouri October 1, 2010

Summary: The 2010 Purina Incredible Dog Challenge, National Championships, to be staged at Purina Farms, will conduct an open qualifying session on Friday, October 1, 2010. Competitors are invited to try out for Incredible Diving Dog only. Questions to: [info@carsonevents.com](mailto:info@carsonevents.com).

### Procedure:

1. See Official Rules sheet for registration and participation procedures.
2. Incredible Diving Dog qualifying is limited to the first 20 dogs.
3. Sign up will occur on site at Purina Farms only on Friday, October 1. No pre-registration available.
4. Starting at **9:30 AM** on **October 1**, interested competitors must sign up at General Information Tent at the event site in Purina Farms.
5. Registration ends at **10:30 AM** on October 1.
6. Purina Farms opens at 8:00 AM
7. Competitors arriving prior to 9:30 AM may form a line at the General Information Tent. You will receive a pass or a numbered card designating your place in line.
8. This card designates your place in line only and is not confirmation of registration.
9. Line up in the order of your number, and follow posted directions for registration.
10. Participants arriving after 10:30 AM or after the field is full (20 dogs) may not sign up.
11. After registration, proceed to the tent area by the stage/dock for open practice/warm-up.
12. Open dock for Diving Dog Qualifying practice will occur from 10:00 AM to 10:25 AM.
13. Incredible Diving Dog Qualifying will start at 10:30 AM.
14. The competitor qualifying for the Diving Dog competition on Saturday, October 2 will be issued additional instructions and asked to stay after the qualifying.



### **From St. Louis**

- I-44 West to Exit 253 / Hwy 100
- Right onto Hwy 100
- Go ½ Mile to Rt. MM
- Left onto Rt. MM
- Go 1 mile to Purina Farms